



****AVAILABLE JULY 2026** **FURNISHED**
****160ppw** **FORTNIGHTLY CLEANER
 INCLUDED** **BRANDLING****

CONSERVATION AREA** A purpose built two story Victorian terrace, ideally located on Clayton Park Square, Jesmond. In the heart of Brandling Village Conservation Area, Clayton Park Square is ideally placed to give access to an excellent choice of shops and cafés on Clayton Road and is close to the amenities and café culture of Jesmond as well as excellent transport links into the city and further afield with Jesmond metro station only a short walk away.

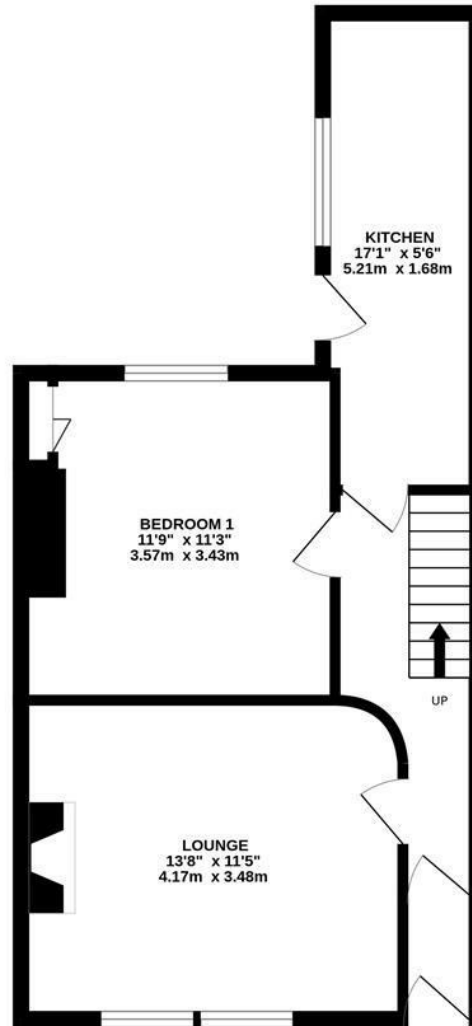
Ideal for a group of four student sharers and boasting 880 Sq. ft the accommodation briefly comprises; entrance lobby though to hallway; lounge to the front; bedroom one on the ground floor, a comfortable double with alcove fitted wardrobe; 17ft galley-style kitchen with door leading to rear yard; first floor landing leads to three more double bedrooms; two separate shower room WCs. Externally there is a private, south-facing yard to the rear as well as on street permit parking to the front.

A fortnightly cleaner will also attend during the tenancy, included in the price.

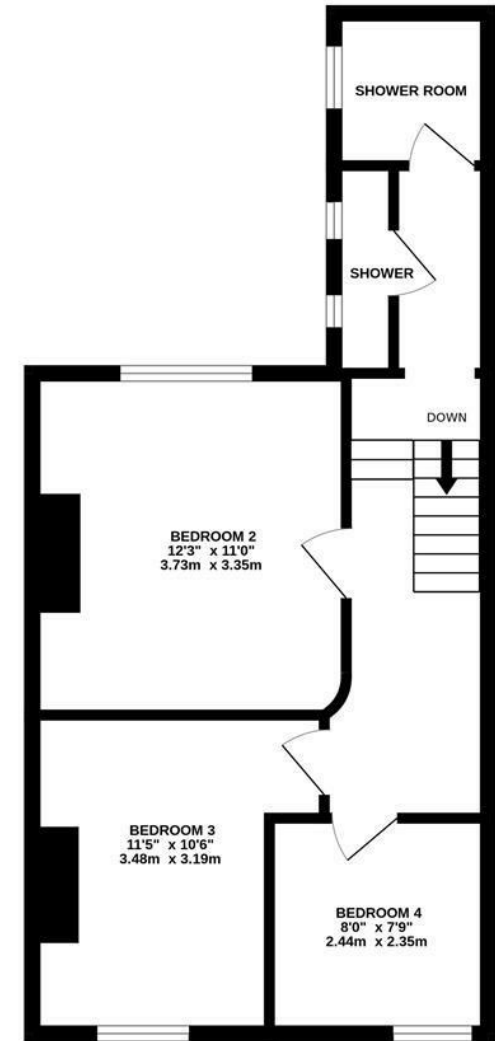
Available 6th July 2026 | £160pppw/
 £2,773.33pcm | Two Storey Victorian Terrace |
 880 Sq. ft (81.7 m2) | Four Double Bedrooms |
 Lounge | Kitchen | Two Shower Rooms | South
 Backing Rear Yard | Excellent Location |
 Brandling Conservation Area | Furnished | DG &
 GCH | On Street Permit Parking | Council Tax
 Band: C | EPC Rating: D

£2,773 PCM

GROUND FLOOR
 436 sq.ft. (40.5 sq.m.) approx.



1ST FLOOR
 444 sq.ft. (41.2 sq.m.) approx.



TOTAL FLOOR AREA : 880 sq.ft. (81.7 sq.m.) approx.

Whilst every attempt has been made to ensure the accuracy of the floorplan contained here, measurements of doors, windows, rooms and any other items are approximate and no responsibility is taken for any error, omission or mis-statement. This plan is for illustrative purposes only and should be used as such by any prospective purchaser. The services, systems and appliances shown have not been tested and no guarantee as to their operability or efficiency can be given.
 Made with Metropix ©2026

IMPORTANT NOTE: These particulars and the descriptions and measurements herein do not constitute representation and whilst every effort has been made to ensure accuracy, this cannot be guaranteed.

